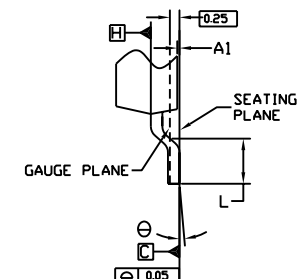
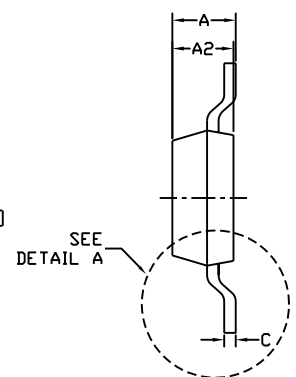
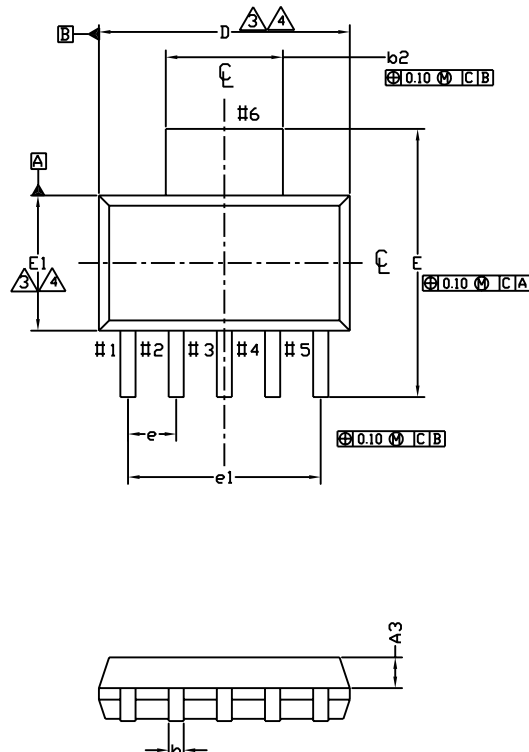


REV	DESCRIPTION	DATE
A	ORIGINAL ISSUE	SEP 01'04



DETAIL A


SYMBOL	ALL DIMENSIONS IN MILLIMETERS			ALL DIMENSIONS IN INCH		
	MINIMUM	NORMAL	MAXIMUM	MINIMUM	NORMAL	MAXIMUM
A	1.57	1.66	1.75	0.062	0.065	0.069
A1	0.02	0.06	0.10	0.001	0.002	0.004
A2	1.55	1.60	1.65	0.061	0.063	0.065
A3	0.87	0.89	0.91	0.034	0.035	0.036
b	0.41	0.457	0.51	0.016	0.018	0.020
b2	2.95	3.00	3.05	0.116	0.118	0.120
c	0.24	0.30	0.32	0.010	0.012	0.013
D	6.45	6.50	6.55	0.254	0.256	0.258
E	6.86	7.00	7.26	0.270	0.275	0.286
E1	3.45	3.50	3.55	0.136	0.138	0.140
e	1.27 BASIC			0.050 BASIC		
e1	5.08 BASIC			0.200 BASIC		
L	0.91	-	1.14	0.036	-	0.045
∅	0°	4°	8°	0°	4°	8°

NOTE:

- 1 DIMENSION ARE IN MILLIMETERS
- 2 CONTROLLING DIMENSION IS MILLIMETER. CONVERTED INCH DIMENSION ARE NOT NECESSARILY EXACT

△ DIMENSIONS D AND E1 ARE DETERMINED AT THE OUTERMOST EXTREMES OF THE PLASTIC BODY EXCLUSIVE OF MOLD FLASH, TIE BAR BURRS, GATE BURRS, AND INTERLEAD FLASH, BUT INCLUDING ANY MISMATCH BETWEEN THE TOP AND BOTTOM OF THE PLASTIC BODY.

△ DATUMS A AND B ARE TO BE DETERMINED AT DATUM H.

 HANA	DRAWN BY: SEKSON	TITLE: SOT-223 6LD PACKAGE OUTLINE DRAWING	
	CHECKED BY: NATAPORN	DATE : SEP 01'04	REF. NO. : JEDEC: TD-261 *AA*
	APPROVED BY: THANAPONG	DWG. NO. PRELIMINARY	SCALE : NTS
	APPROVED BY: REY	REV. A	SHEET 1 OF 1